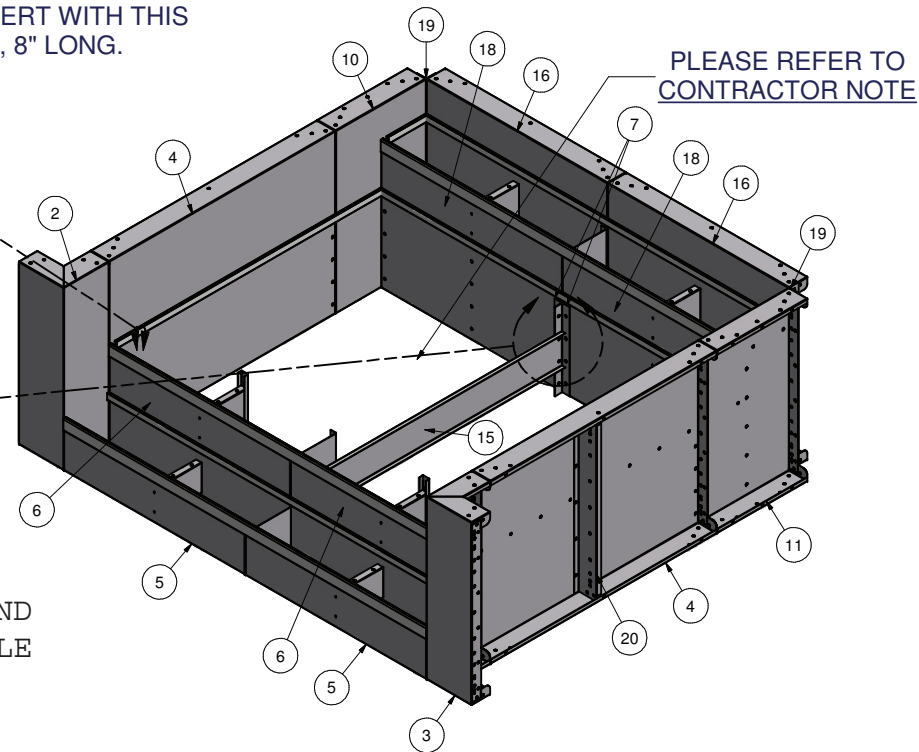
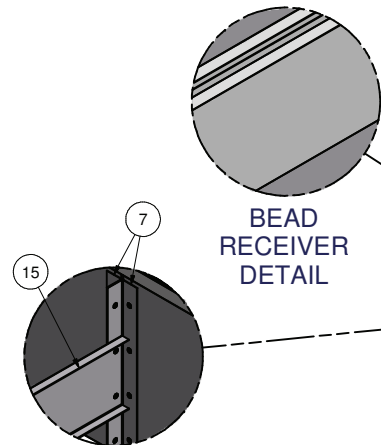


Parts List			
ITEM	QTY	PART NUMBER	DESCRIPTION
1	30	COP-KCVRET-W-1	COP COPING STIFFENER 1 5/8"-1PC
2	1	ESC-10698-SRWL	STR REV, WALL, LEFT
3	1	ESC-10698-SRWR	STR REV, WALL, RIGHT
4	2	ESC-10698-SWM	STRAIGHT, SIDE WALL, MIDDLE
5	2	ESC-5825-BR	STRAIGHT, BOTTOM RISER
6	2	ESC-5825-MR	STRAIGHT, MIDDLE RISER
7	2	ESC-5881-BB	BRACE, 90° L BRACKET
8	1	ESC-6860-TRS	BRACE, TOP RISER SUPPORT
9	1	ESC-7470-B	BRACE, 2-TRD RISER SUPPORT
10	1	ESC-7559-SWBL	STRAIGHT, SIDE WALL, BACK, LEFT
11	1	ESC-7559-SWBR	STRAIGHT, SIDE WALL, BACK, RIGHT
12	2	ESC-7713-BRS	BRACE, BOTTOM RISER SUPPORT
13	2	ESC-7713-MRS	BRACE, MIDDLE RISER SUPPORT
14	2	ESC-7713-TRS	BRACE, TOP RISER SUPPORT
15	1	ESC-7946-CB	BRACE, CENTER SUPPORT
16	2	ESC-9129-BW	STRAIGHT, BACK WALL
17	2	ESC-9230-DS	BRACE, DRIVE STAKE CHANNEL SUPPORT
18	2	ESC-9432-TR	STRAIGHT, TOP RISER
19	2	IPC-AB90	90 DEGREE BRACE
20	4	M0065-1	PANEL Z-RIB W/BUTTRESS HOLES
21	0'	OPC-CONREC-XX	NOTCHED CONCRETE RECEPTOR
22	24'	OPC-CONREC-XXU	UN-NOTCHED CONCRETE RECEPTOR
23	38'	SSC-1099-PFT	STEEL STEP PVC BEAD RETAINER (PER FT)

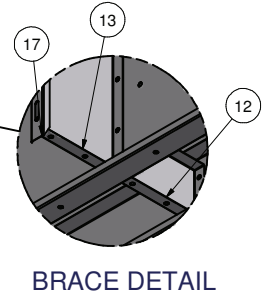
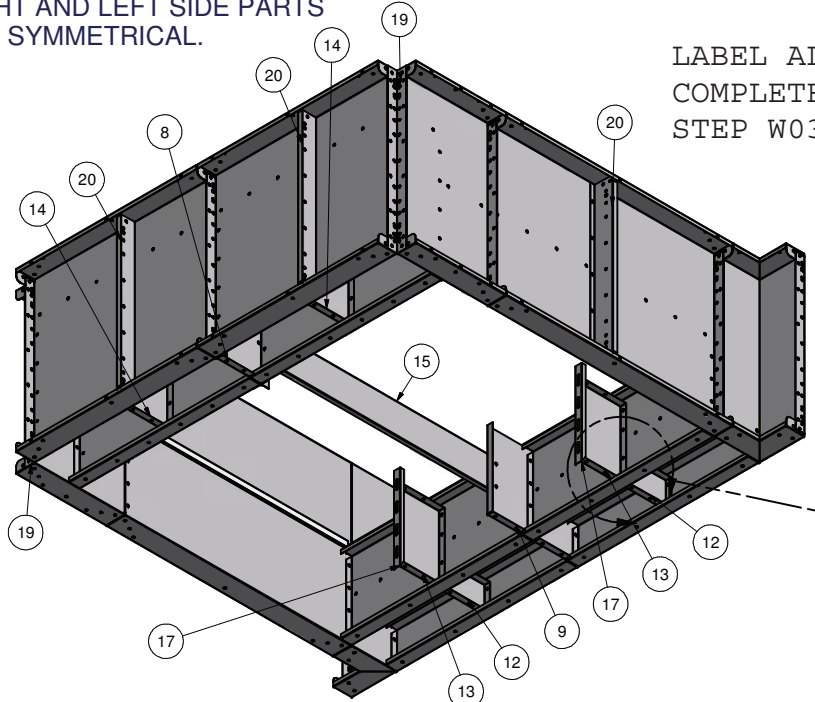
NOTE:
INCLUDE PVC (2) 6" RADIUS INSERT WITH THIS SUNLEDGE/STEP FOR CORNER, 8" LONG.



NOTE:
RIGHT AND LEFT SIDE PARTS ARE SYMMETRICAL.

BRACE DETAIL

LABEL ALL PARTS AND COMPLETELY ASSEMBLE STEP W030802



KEEP BEAD RECEIVERS ATTACHED TO THE RISERS & WALLS FOR SHIPPING. A TOTAL OF 456" (38') OF BEAD RECEIVER IS REQUIRED.

CONTRACTOR MUST FIELD FIT ALL CONCRETE RECEPTOR. TOTALS REQUIRED FOR THIS CUSTOM PRODUCT APPLICATION.
 OPC-CONREC-XX (NOTCHED) = 0" (0')
 OPC-CONREC-XXU (UN-NOTCHED) = 288" (24')
 COP-KCVRET-W-1 (STIFFENER) = 30

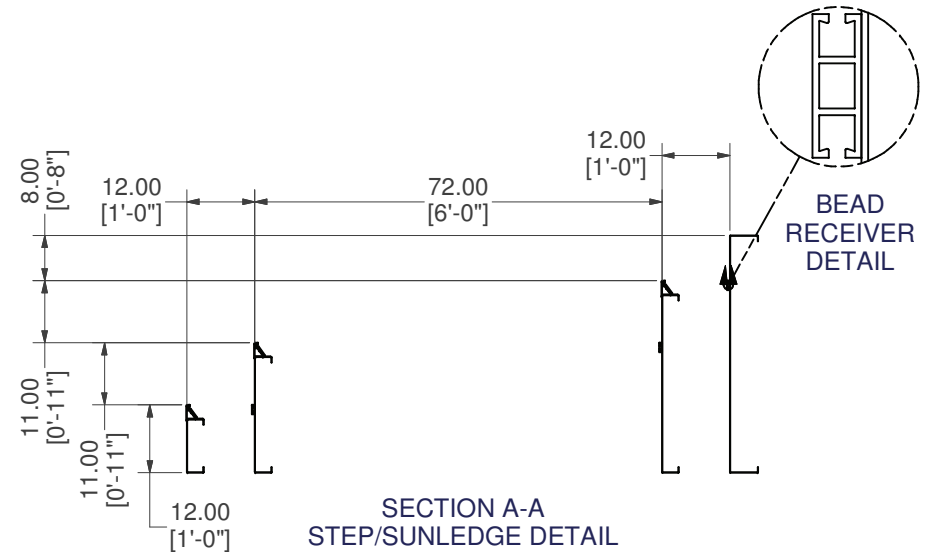
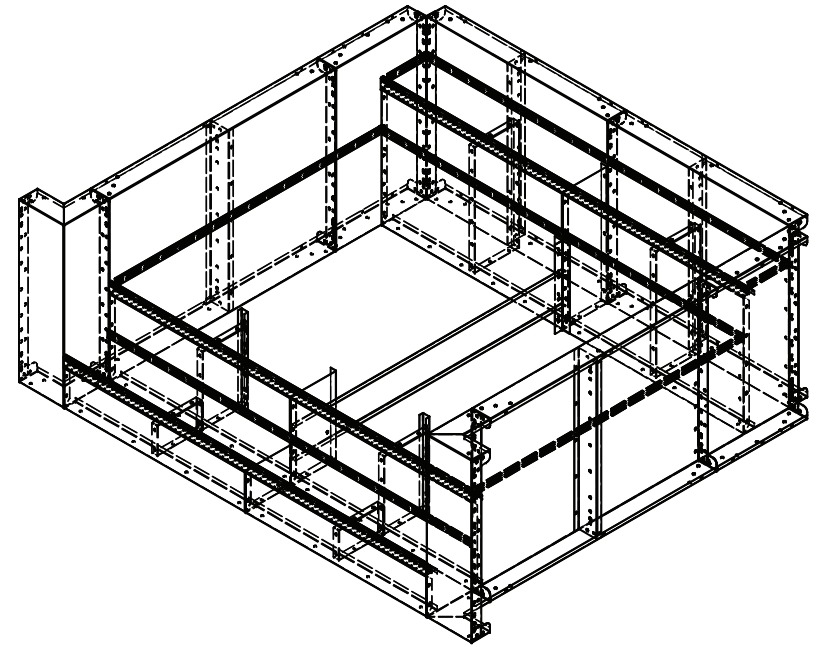
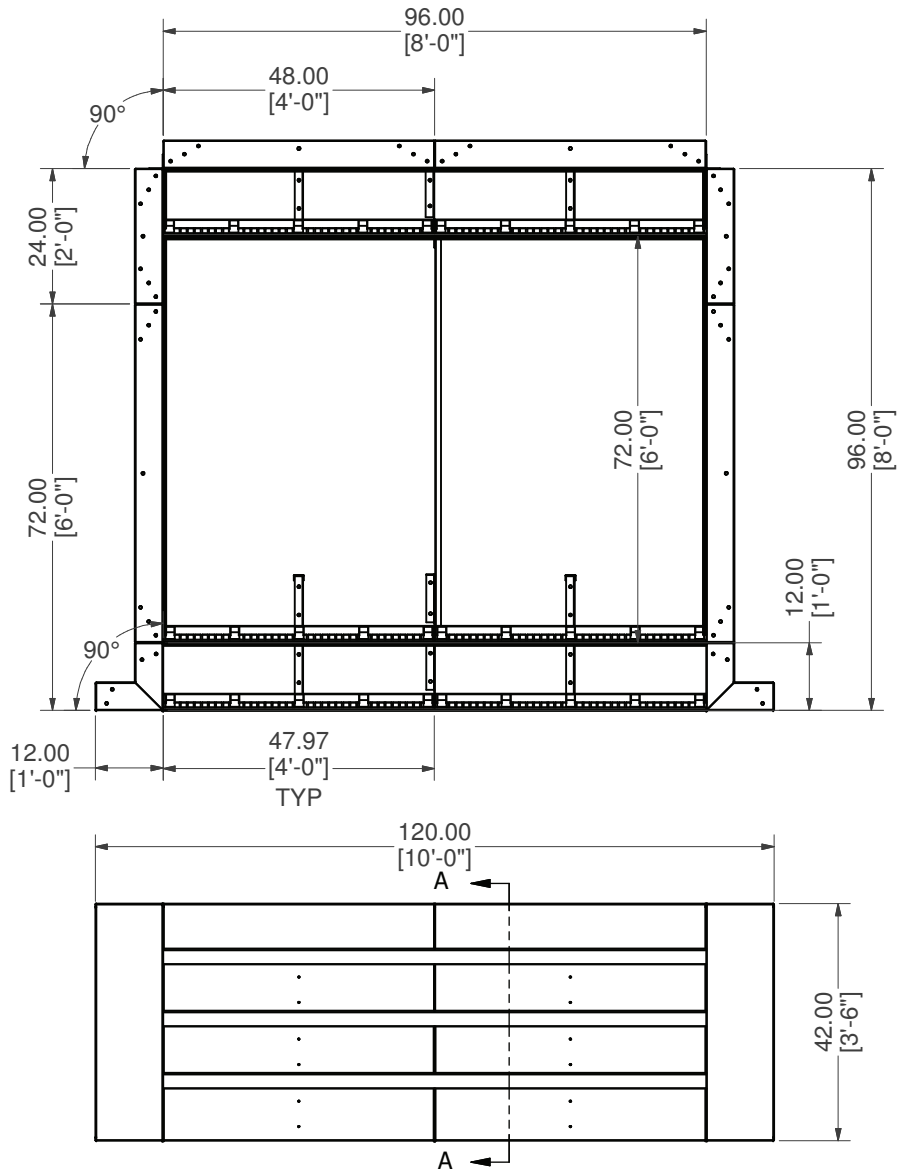
CONTRACTOR NOTE:
BACK FILL STEP/SUNLEDGE AREA WITH COMPACTED EARTH MATERIAL. FINISH STEP AREA WITH 2" OF HARDEN FLOOR MATERIAL FLUSH WITH THE TOP OF BEAD RECEIVER.

CONTRACTOR NOTE:
CONTRACTOR IS RESPONSIBLE FOR SECURING ALL RISERS INTO PLACE WITH REBAR HOLES BEFORE BACKFILLING THIS CUSTOM STEP

10' X 8' X 90° CRN OPEN TOP STEP W/6' MIDDLE TREAD

PART #: ESC-10698	WEIGHT: 647.78 lbmass	MACHINE TIME: N/A	FILE/DIRECTORY: C:\Vault\FTW\Design\CUSTOM STEPS\ESC-10000-10999\ESC-10698.idw
	TOLERANCES EXCEPT AS NOTED	MATERIAL:	DATE: 7/13/2020
	0/0 0.0 0.00 0.000 0'	DRAWN BY: BR	SHEET: 1 OF 19
	±1/8 ±0.25 ±0.0625 ±0.03125 ±1/2'		NOTES: W030802, SO# 5464675 PO# CQ224410

NOTE:
RIGHT AND LEFT SIDE PARTS
ARE SYMMETRICAL.

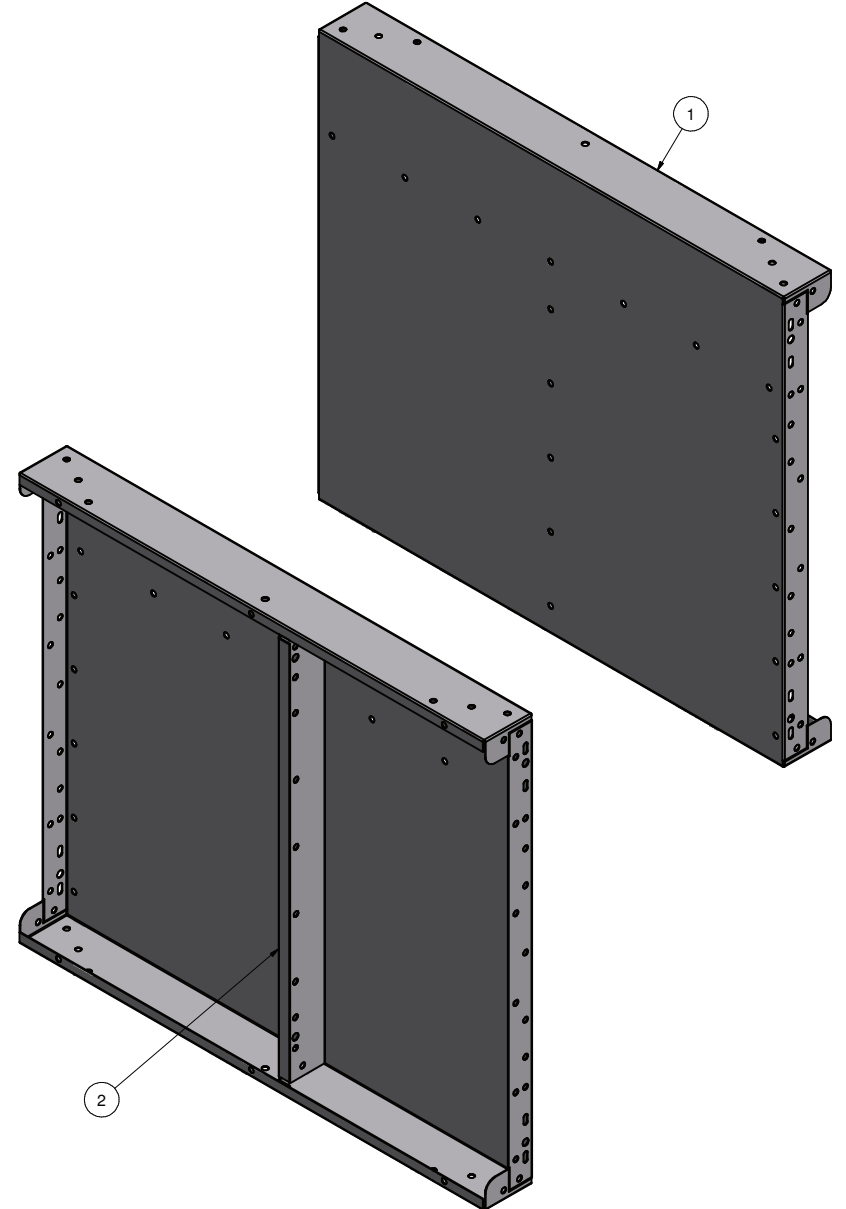
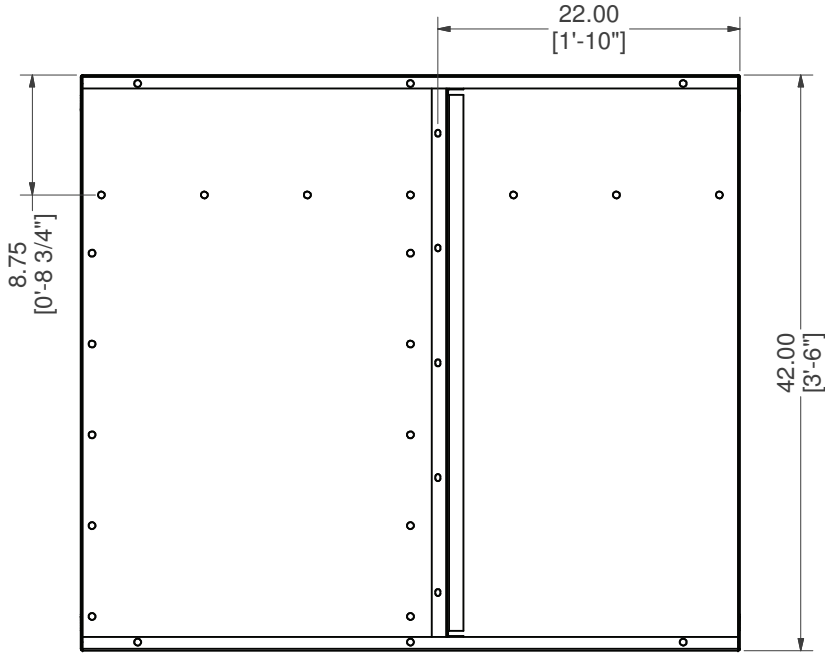
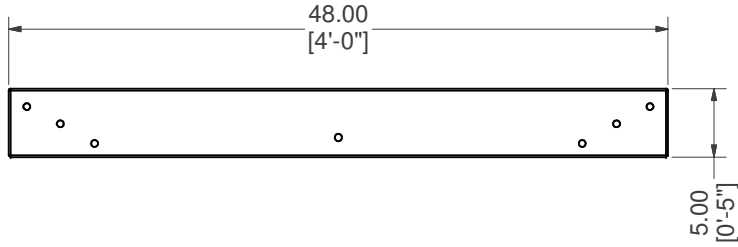


10' X 8' X 90° CRN OPEN TOP STEP W/6' MIDDLE TREAD


PART #: ESC-10698	WEIGHT: 647.78 lbmass	MACHINE TIME: N/A	FILE/DIRECTORY: C:\Vault\FTW\Design\CUSTOM STEPS\ESC-10000-10999\ESC-10698.idw
LATHAM behind every pool	TOLERANCES EXCEPT AS NOTED 0/0 0.0 0.00 0.000 0' ±1/8 ±0.25 ±0.0625 ±0.03125 ±1/2'	MATERIAL:	DATE: 7/13/2020
		DRAWN BY: BR	NOTES:
			SHEET: 2 OF 19

Parts List			
ITEM	QTY	PART NUMBER	DESCRIPTION
1	1	ESC-9129-BW	STRAIGHT, BACK WALL
2	1	M0065-1	PANEL Z-RIB W/BUTTRESS HOLES

WELDCODE #4



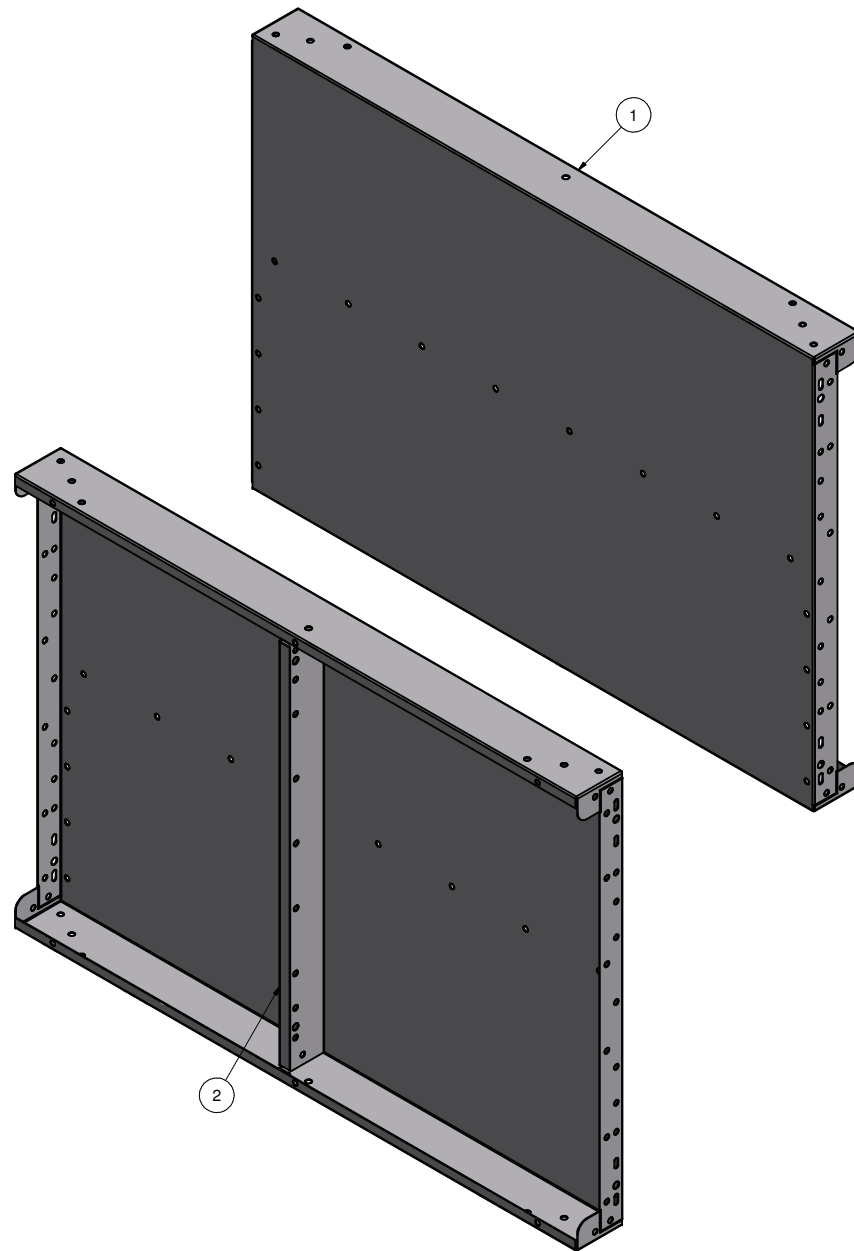
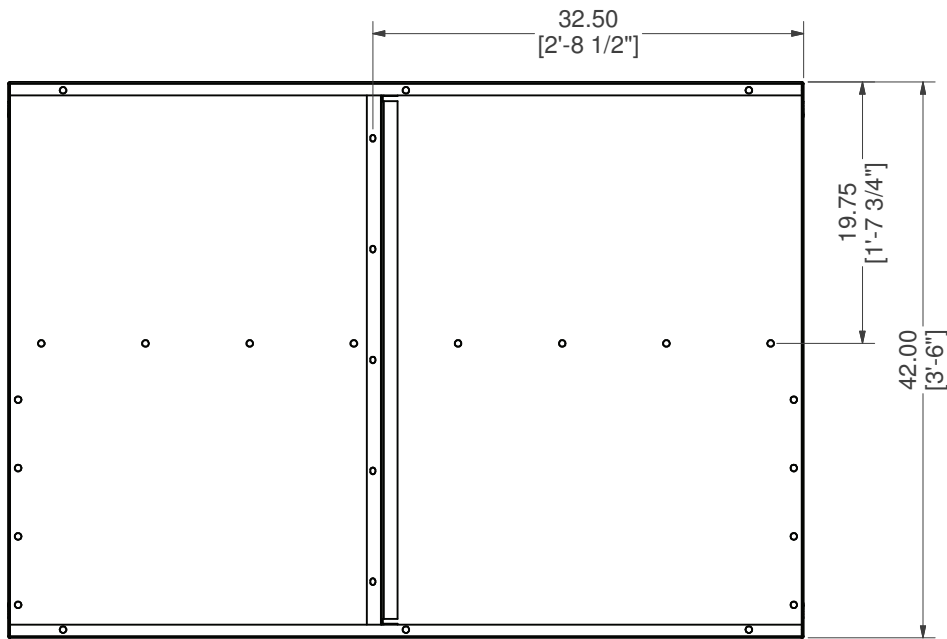
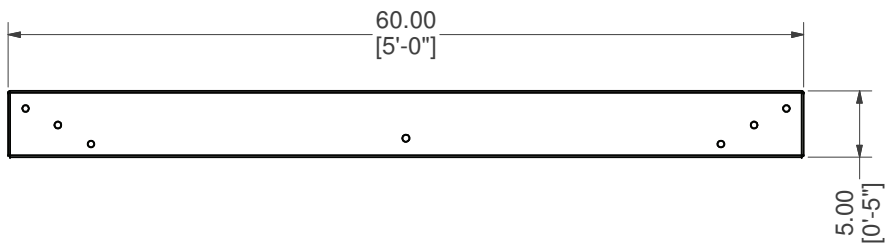
STRAIGHT, BACK WALL W/Z-RIB

PART #: ESC-9129-BW 	WEIGHT: 61.67 lbmass	MACHINE TIME: N/A	FILE/DIRECTORY: C:\Vault\FTW\Design\CUSTOM STEPS\ESC-10000-10999\ESC-10698.idw
	TOLERANCES EXCEPT AS NOTED 0/0 0.0 0.00 0.000 0' ±1/8 ±0.25 ±0.0625 ±0.03125 ±1/2'	MATERIAL: DRAWN BY: BR	DATE: 7/13/2020 SHEET: 3 OF 19

Parts List

ITEM	QTY	PART NUMBER	DESCRIPTION
1	1	ESC-10698-SWM	STRAIGHT, SIDE WALL, MIDDLE
2	1	M0065-1	PANEL Z-RIB W/BUTTRESS HOLES

WELDCODE #8



STRAIGHT, SIDE WALL, MIDDLE W/Z-RIB

PART #: ESC-10698-SWM

WEIGHT:
74.73 lbmass

MACHINE TIME:
N/A

FILE/DIRECTORY:
C:\Vault\FTW\Design\CUSTOM STEPS\ESC-10000-10999\ESC-10698.idw



TOLERANCES EXCEPT AS NOTED
0/0 0.0 0.00 0.000 0'
±1/8 ±0.25 ±0.0625 ±0.03125 ±1/2'

MATERIAL:

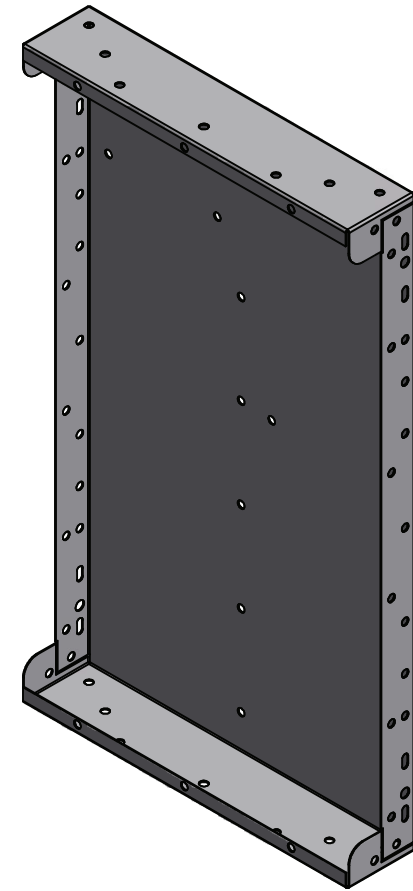
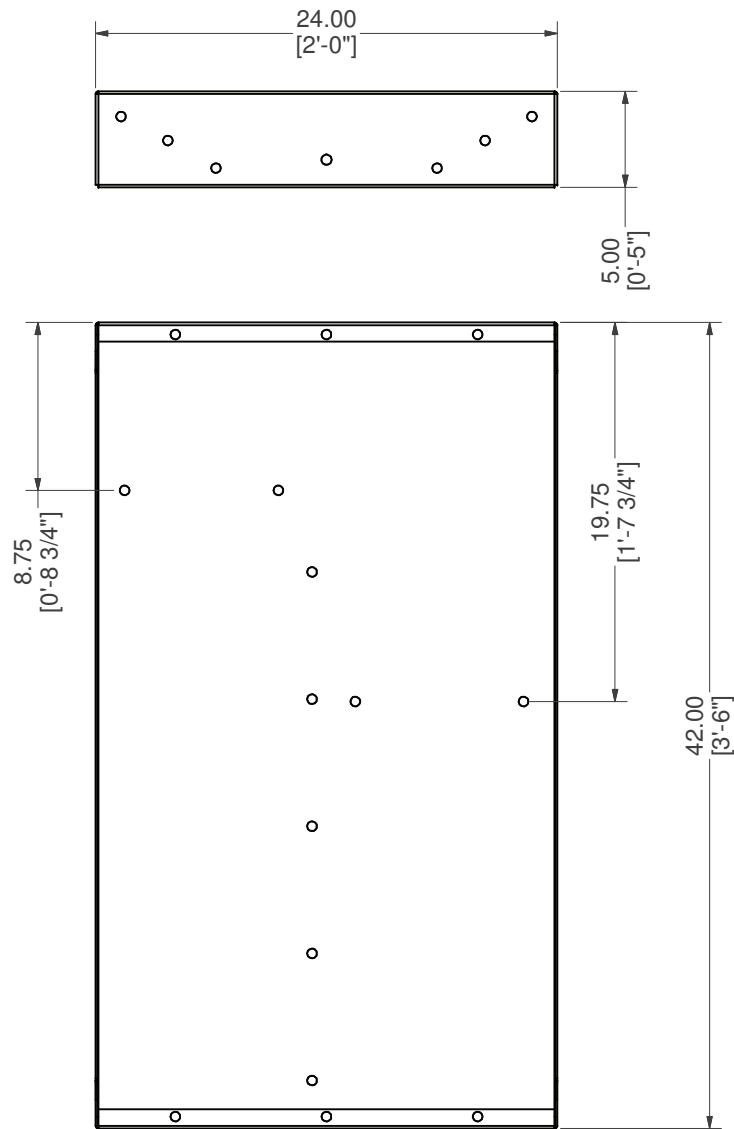
DATE: 7/13/2020

NOTES:

DRAWN BY: BR

SHEET: 4 OF 19

WELDCODE #8
LOCATE 32.5" FROM
LEADING EDGE



NOTE:
RIGHT SIDE PART IS SYMMETRICAL TO LEFT SIDE PART SHOWN.

STRAIGHT, SIDE WALL, BACK, LEFT

PART #: ESC-7559-SWBL

WEIGHT:
30.19 lbmass

MACHINE TIME:
N/A

FILE/DIRECTORY:

C:\Vault\FTW\Design\CUSTOM STEPS\ESC-10000-10999\ESC-10698.idw



TOLERANCES EXCEPT AS NOTED
0/0 0.0 0.00 0.000 0'
±1/8 ±0.25 ±0.0625 ±0.03125 ±1/2'

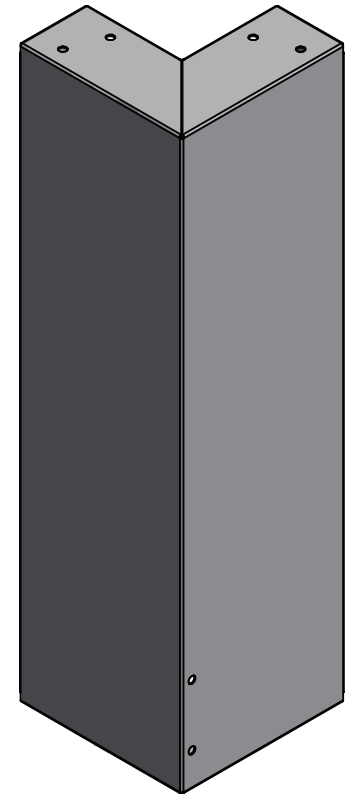
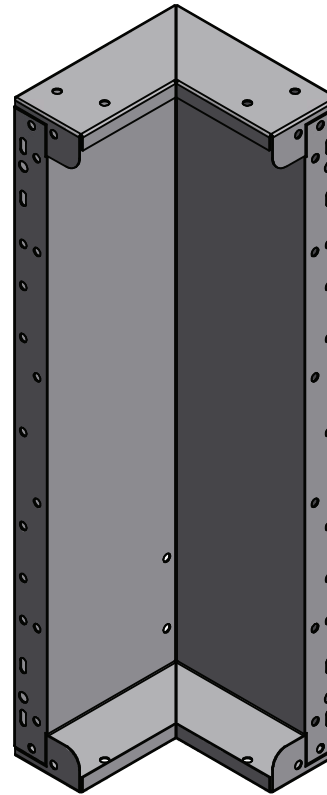
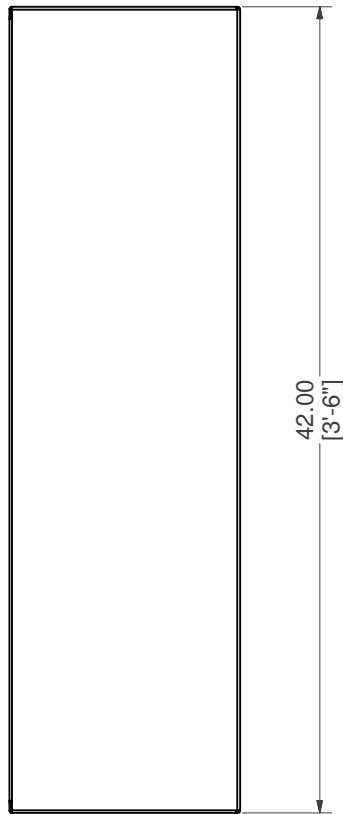
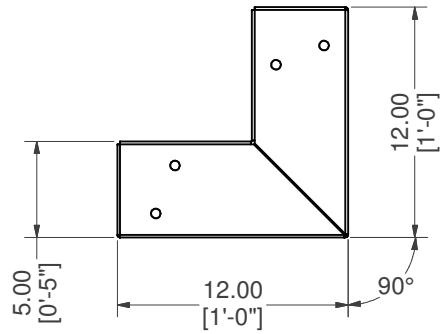
MATERIAL:
14 GA. GALVANIZED

DATE : 7/13/2020

NOTES:

DRAWN BY: BR

SHEET : 5 OF 19



NOTE:
RIGHT SIDE PART IS SYMMETRICAL TO LEFT SIDE PART SHOWN.

STR REV, WALL, LEFT

PART #: ESC-10698-SRWL

WEIGHT:
26.66 lbmass

MACHINE TIME:
N/A

FILE/DIRECTORY:

C:\Vault\FTW\Design\CUSTOM STEPS\ESC-10000-10999\ESC-10698.idw



TOLERANCES EXCEPT AS NOTED
0/0 0.0 0.00 0.000 0'
±1/8 ±0.25 ±0.0625 ±0.03125 ±1/2'

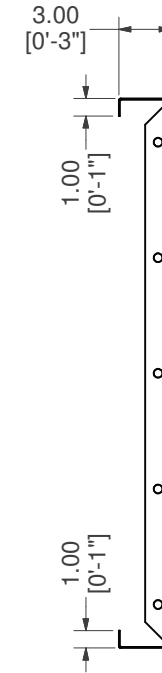
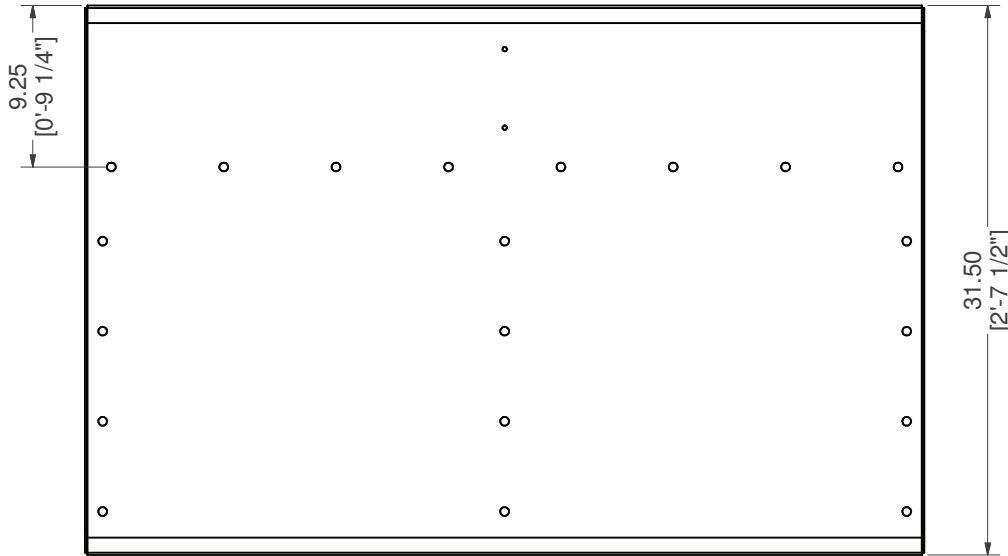
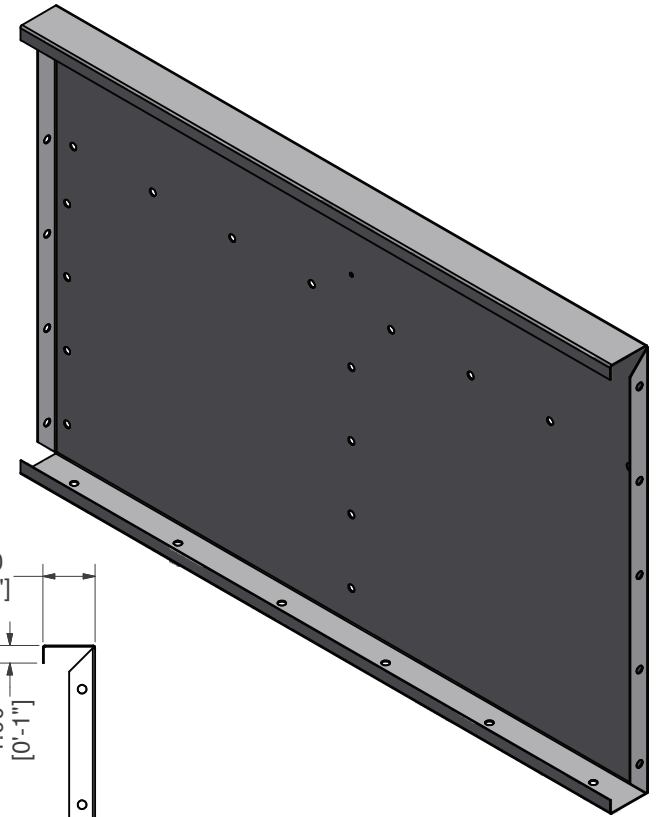
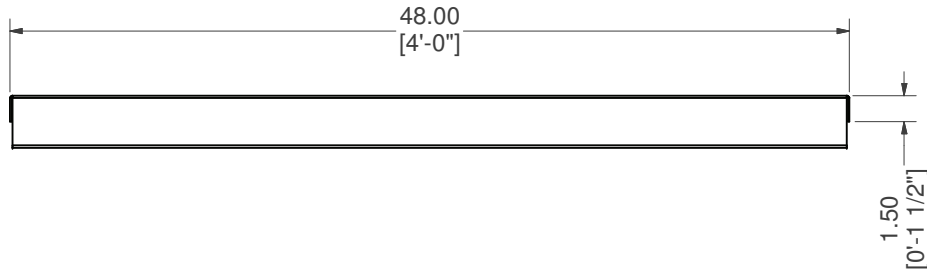
MATERIAL:
14 GA. GALVANIZED

DATE : 7/13/2020


NOTES:

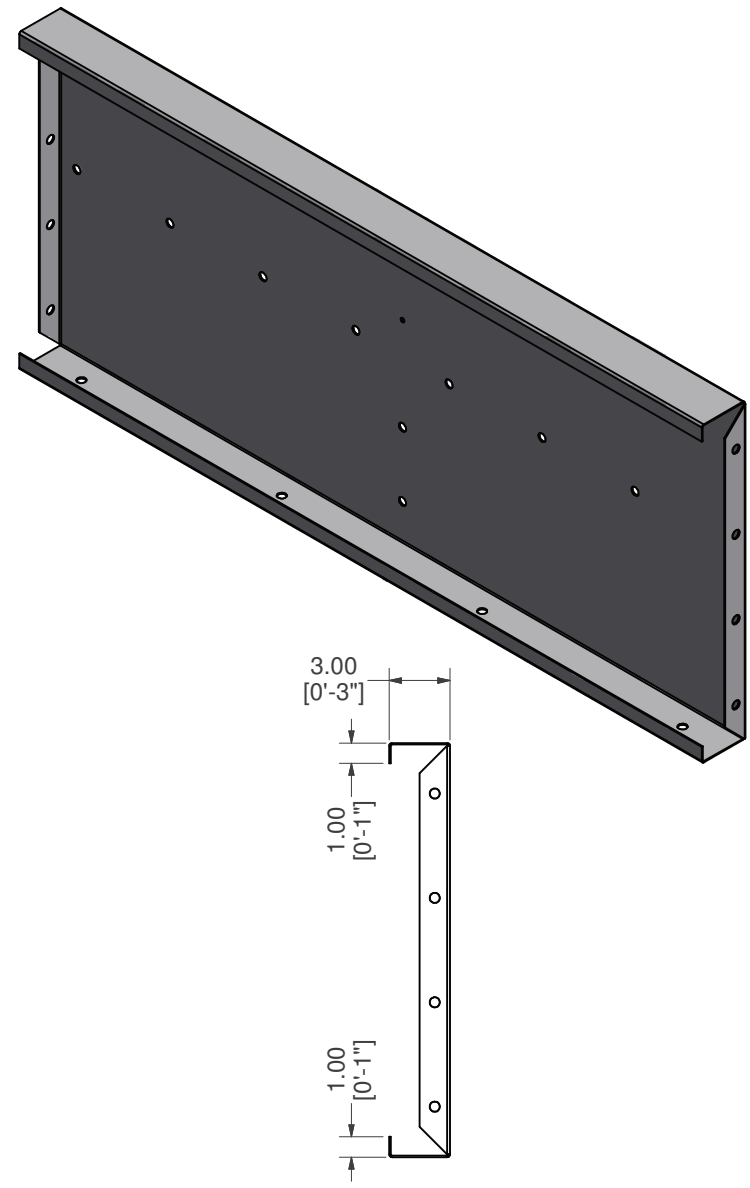
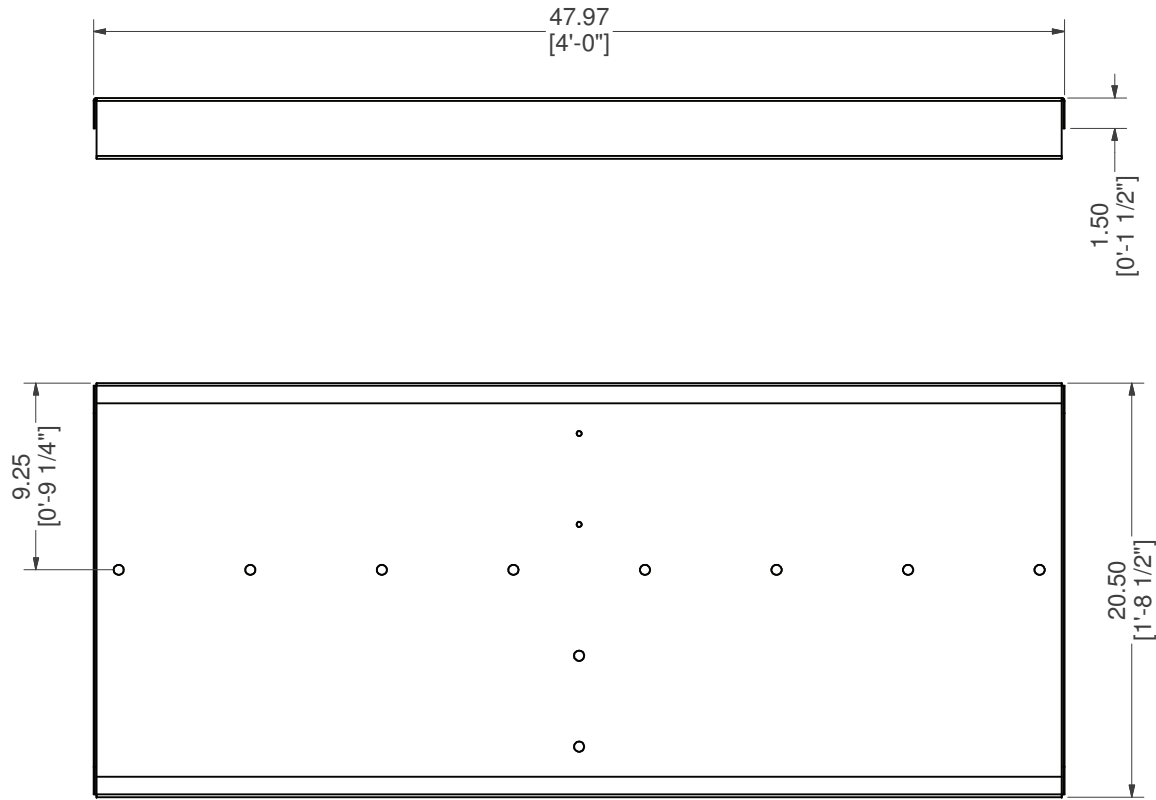
DRAWN BY: BR

SHEET : 6 OF 19




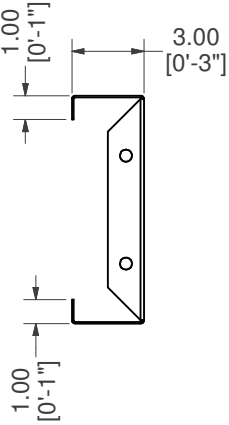
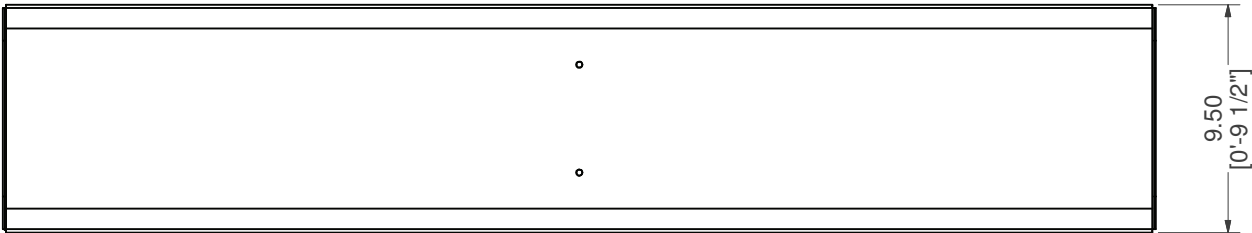
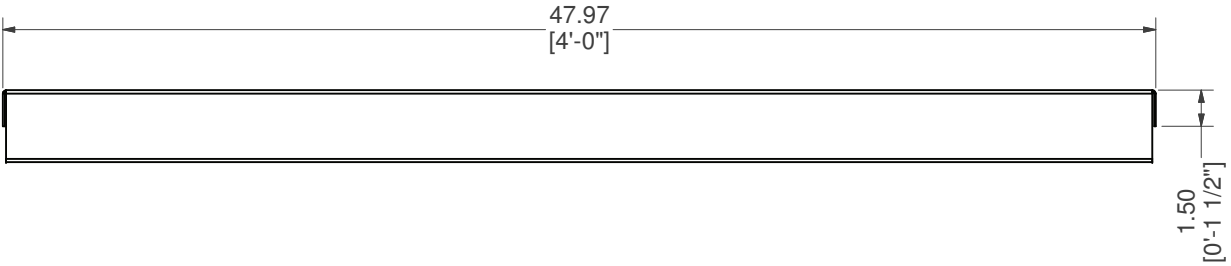
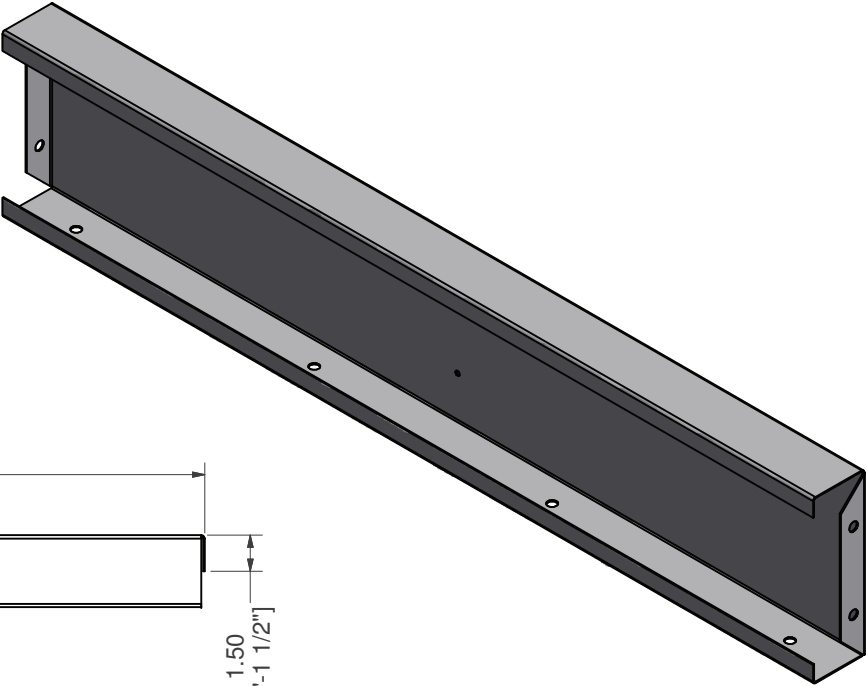
STRAIGHT, TOP RISER

PART #: ESC-9432-TR 	WEIGHT: 39.57 lbmass	MACHINE TIME: N/A	FILE/DIRECTORY: C:\Vault\FTW\Design\CUSTOM STEPS\ESC-10000-10999\ESC-10698.idw
	TOLERANCES EXCEPT AS NOTED 0/0 0.0 0.00 0.000 0' ±1/8 ±0.25 ±0.0625 ±0.03125 ±1/2'	MATERIAL: 14 GA. GALVANIZED	DATE: 7/13/2020
DRAWN BY: BR	SHEET: 7 OF 19		




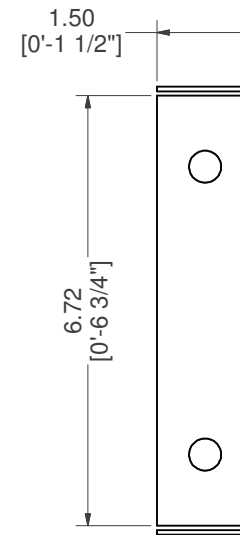
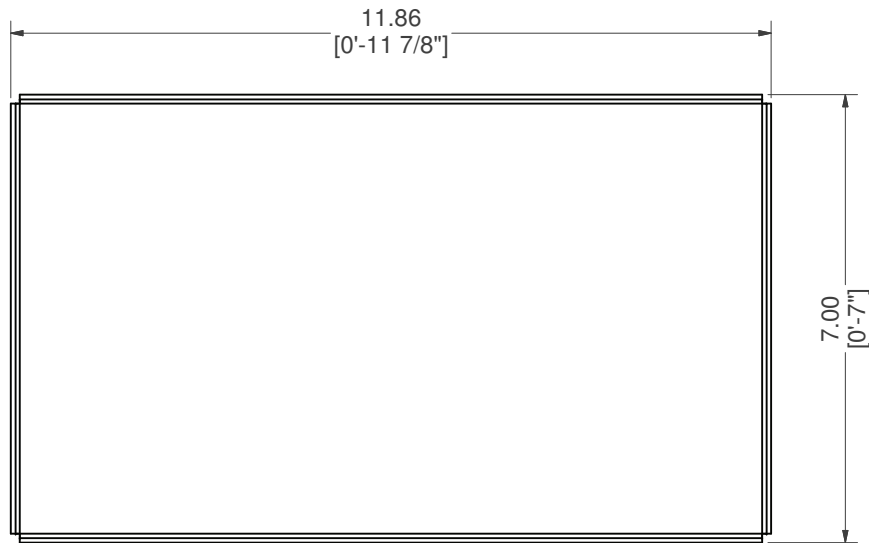
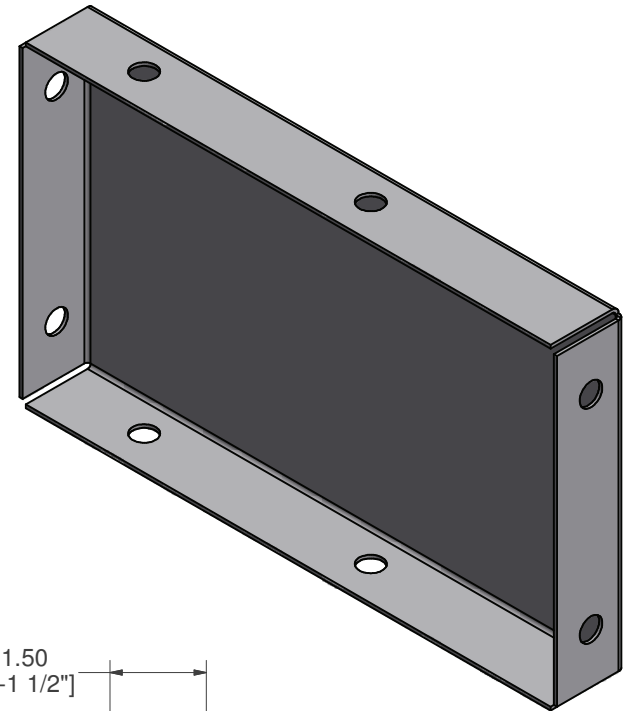
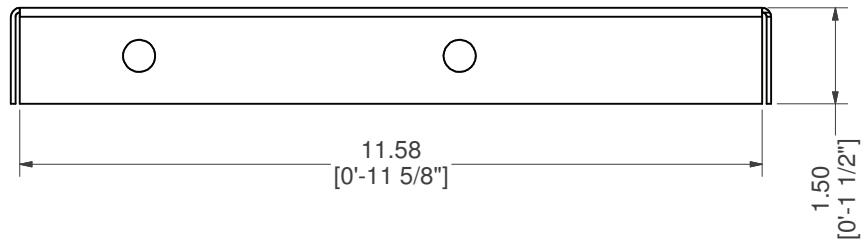
STRAIGHT, MIDDLE RISER

PART #: ESC-5825-MR	WEIGHT: 28.25 lbmass	MACHINE TIME: N/A	FILE/DIRECTORY: C:\Vault\FTW\Design\CUSTOM STEPS\ESC-10000-10999\ESC-10698.idw
	TOLERANCES EXCEPT AS NOTED 0/0 0.0 0.00 0.000 0' ±1/8 ±0.25 ±0.0625 ±0.03125 ±1/2'	MATERIAL: 14 GA. GALVANIZED DRAWN BY: BR	DATE: 7/13/2020 NOTES: SHEET: 8 OF 19



STRAIGHT, BOTTOM RISER

PART #: ESC-5825-BR	WEIGHT: 16.97 lbmass	MACHINE TIME: N/A	FILE/DIRECTORY: C:\Vault\FTW\Design\CUSTOM STEPS\ESC-10000-10999\ESC-10698.idw
	TOLERANCES EXCEPT AS NOTED 0/0 0.0 0.00 0.000 0' ±1/8 ±0.25 ±0.0625 ±0.03125 ±1/2'	MATERIAL: 14 GA. GALVANIZED DRAWN BY: BR	DATE : 7/13/2020 SHEET : 9 OF 19 NOTES:



BRACE, BOTTOM RISER SUPPORT

PART #: ESC-7713-BRS

WEIGHT:
2.68 lbmass

MACHINE TIME:
N/A

FILE/DIRECTORY:

C:\Vault\FTW\Design\CUSTOM STEPS\ESC-10000-10999\ESC-10698.idw



TOLERANCES EXCEPT AS NOTED
0/0 0.0 0.00 0.000 0'
±1/8 ±0.25 ±0.0625 ±0.03125 ±1/2'

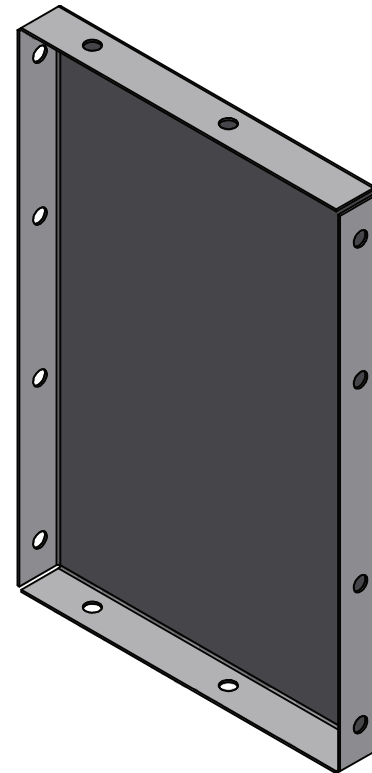
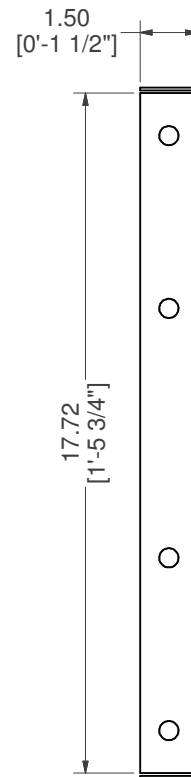
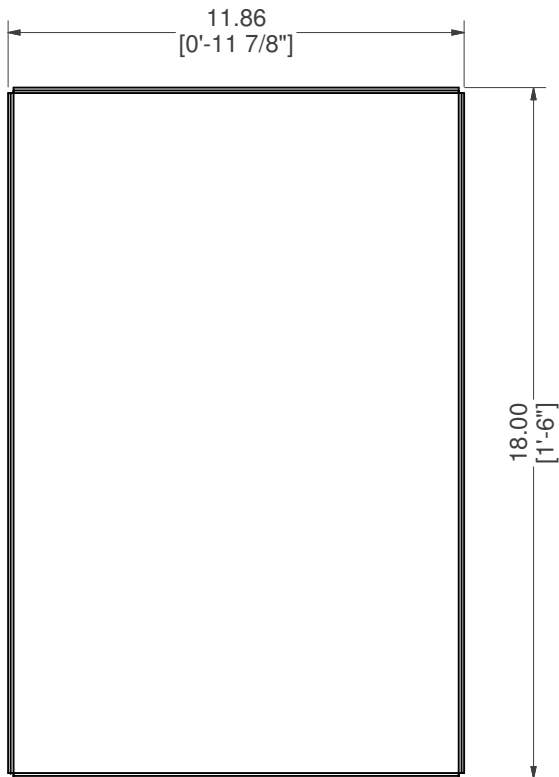
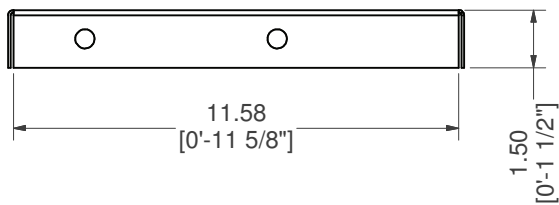
MATERIAL:
14 GA. GALVANIZED

DATE : 7/13/2020

NOTES:

DRAWN BY: BR

SHEET : 10 OF 19



BRACE, MIDDLE RISER SUPPORT

PART #: ESC-7713-MRS

WEIGHT:
5.94 lbmass

MACHINE TIME:
N/A

FILE/DIRECTORY:

C:\Vault\FTW\Design\CUSTOM STEPS\ESC-10000-10999\ESC-10698.idw



TOLERANCES EXCEPT AS NOTED
0/0 0.0 0.00 0.000 0'
±1/8 ±0.25 ±0.0625 ±0.03125 ±1/2'

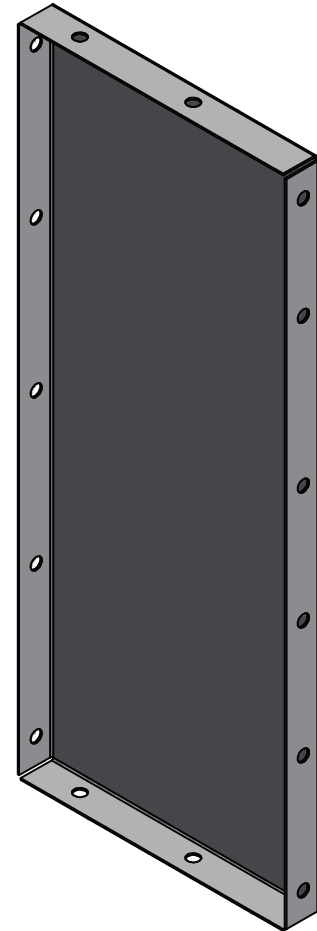
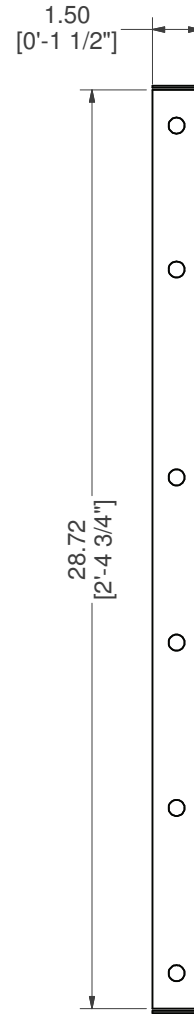
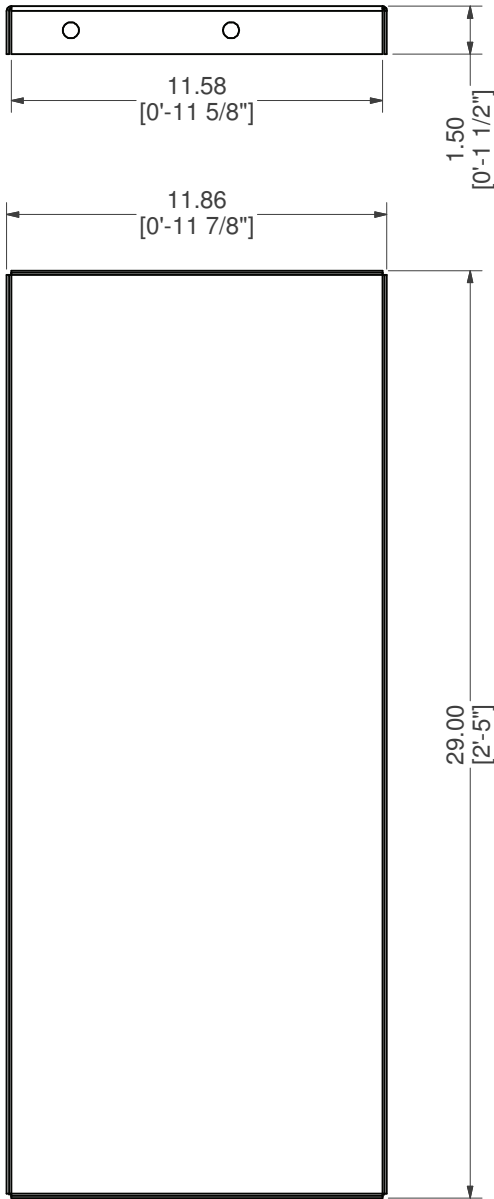
MATERIAL:
14 GA. GALVANIZED

DATE: 7/13/2020

NOTES:

DRAWN BY: BR

SHEET: 11 OF 19



BRACE, TOP RISER SUPPORT

PART #: ESC-7713-TRS

WEIGHT:
9.19 lbmass

MACHINE TIME:
N/A

FILE/DIRECTORY:

C:\Vault\FTW\Design\CUSTOM STEPS\ESC-10000-10999\ESC-10698.idw



TOLERANCES EXCEPT AS NOTED
0/0 0.0 0.00 0.000 0'
±1/8 ±0.25 ±0.0625 ±0.03125 ±1/2'

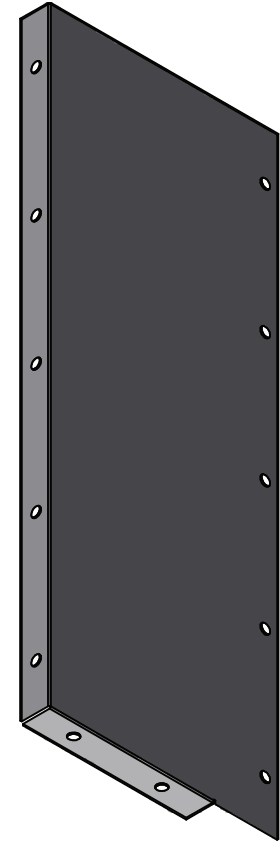
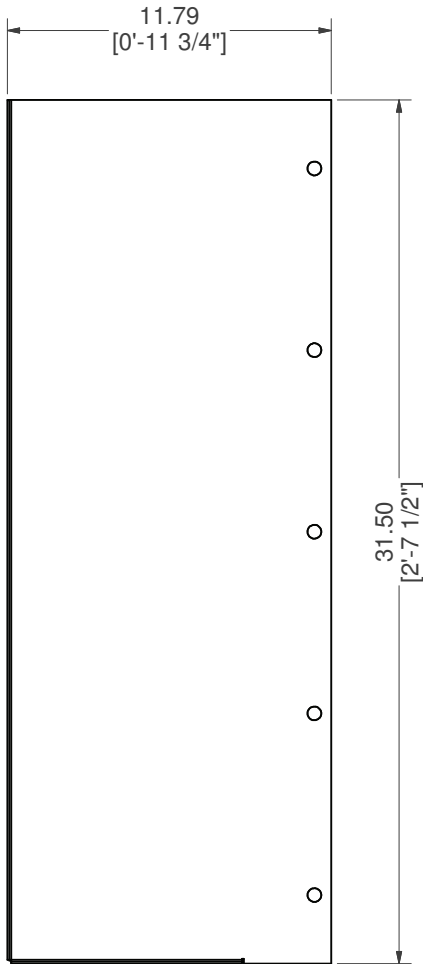
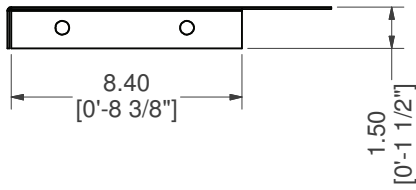
MATERIAL:
14 GA. GALVANIZED

DATE: 7/13/2020

NOTES:

DRAWN BY: BR

SHEET: 12 OF 19



BRACE, TOP RISER SUPPORT

PART #: ESC-6860-TRS

WEIGHT:
8.62 lbmass

MACHINE TIME:
N/A

FILE/DIRECTORY:
C:\Vault\FTW\Design\CUSTOM STEPS\ESC-10000-10999\ESC-10698.idw



TOLERANCES EXCEPT AS NOTED
0/0 0.0 0.00 0.000 0'
±1/8 ±0.25 ±0.0625 ±0.03125 ±1/2'

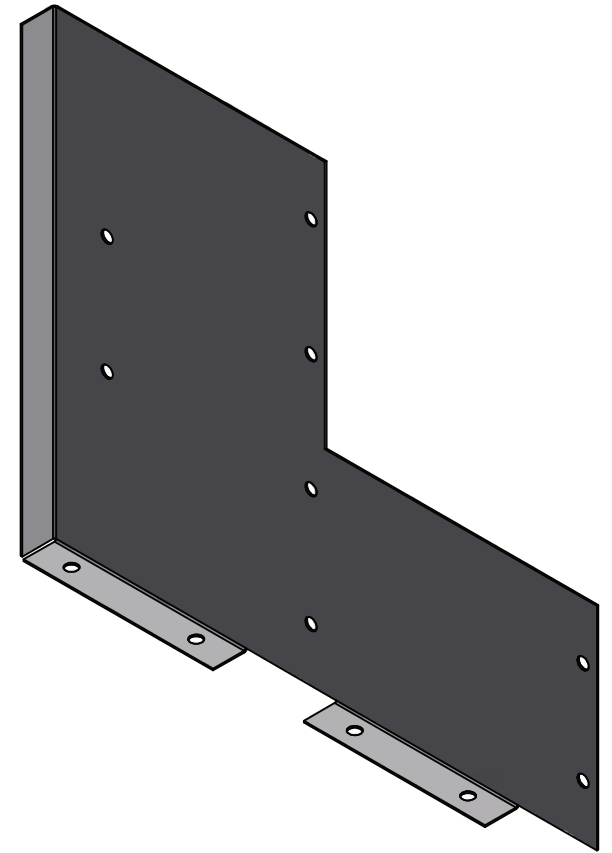
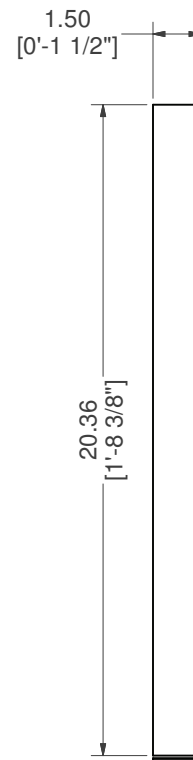
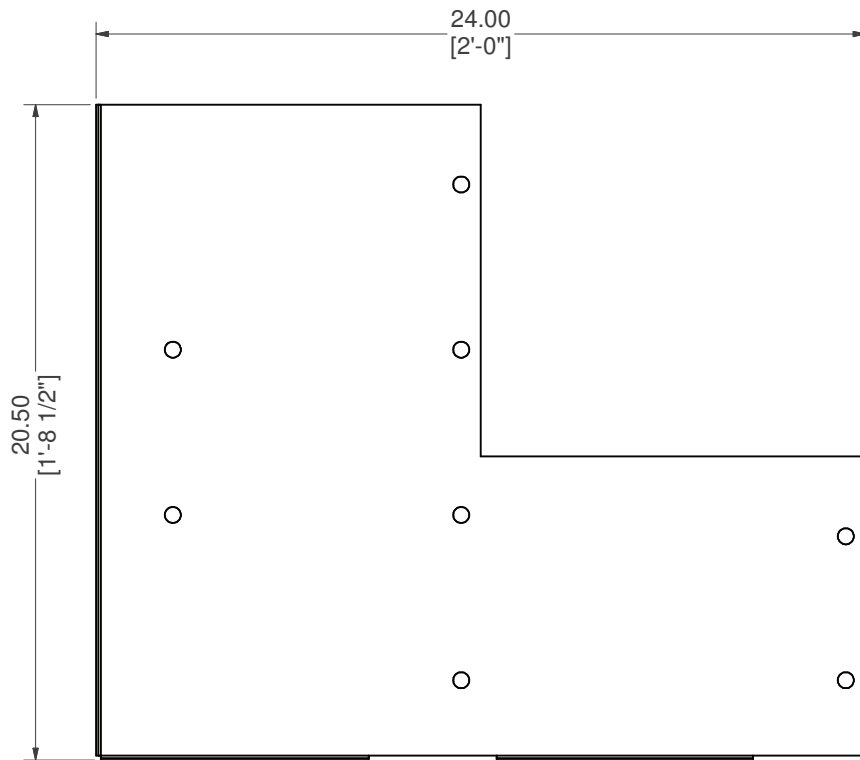
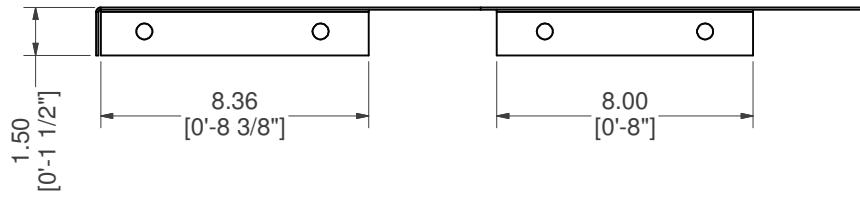
MATERIAL:
14 GA. GALVANIZED

DATE : 7/13/2020

NOTES:

DRAWN BY: BR

SHEET : 13 OF 19



BRACE, 2-TRD RISER SUPPORT

PART #: ESC-7470-B

WEIGHT:
8.28 lbmass

MACHINE TIME:
N/A

FILE/DIRECTORY:

C:\Vault\FTW\Design\CUSTOM STEPS\ESC-10000-10999\ESC-10698.idw



TOLERANCES EXCEPT
AS NOTED

0/0	0.0	0.00	0.000	0'
±1/8	±0.25	±0.0625	±0.03125	±1/2'

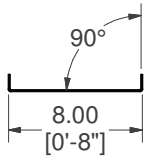
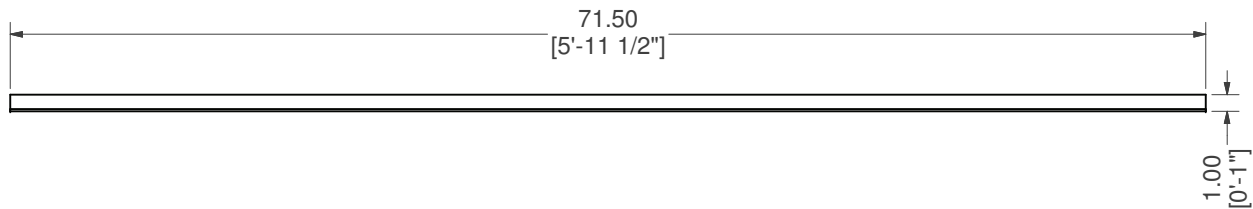
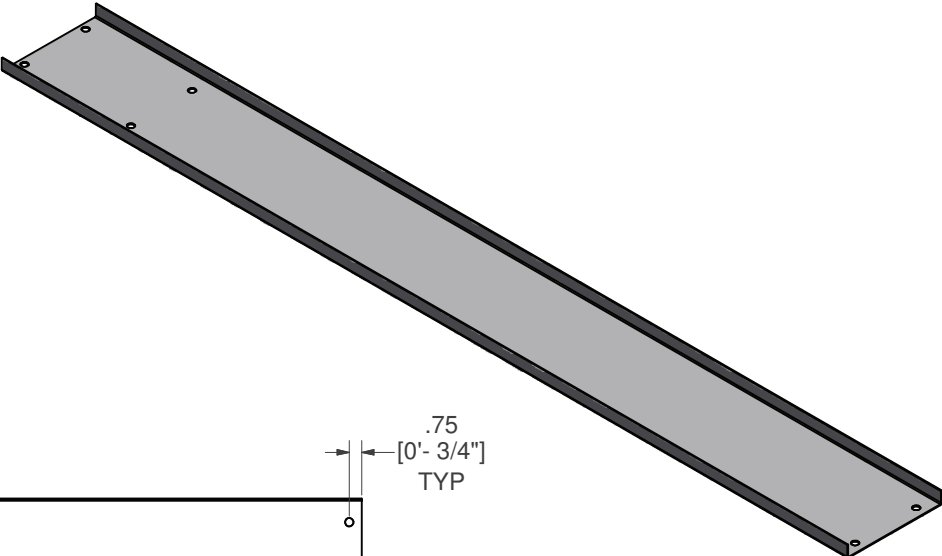
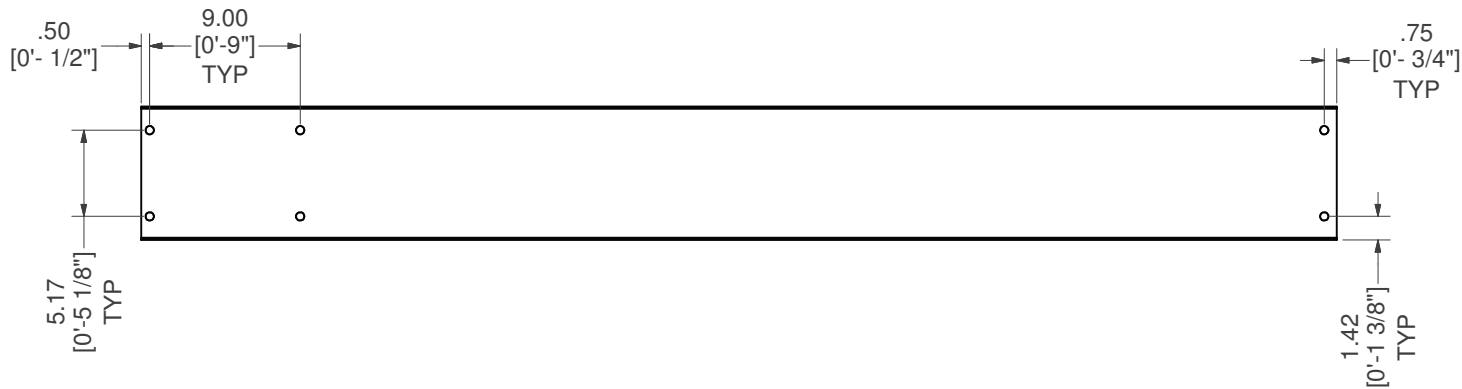
MATERIAL:
14 GA. GALVANIZED

DATE: 7/13/2020


NOTES:

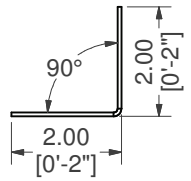
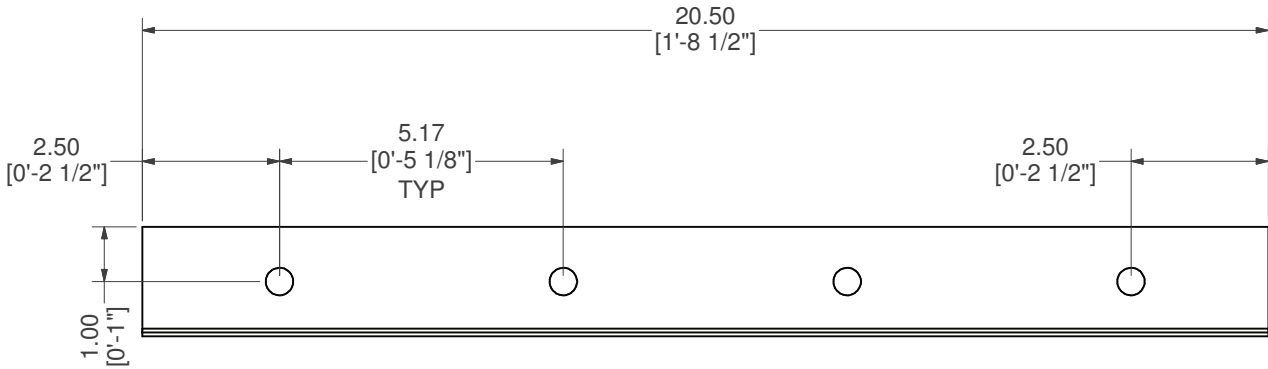
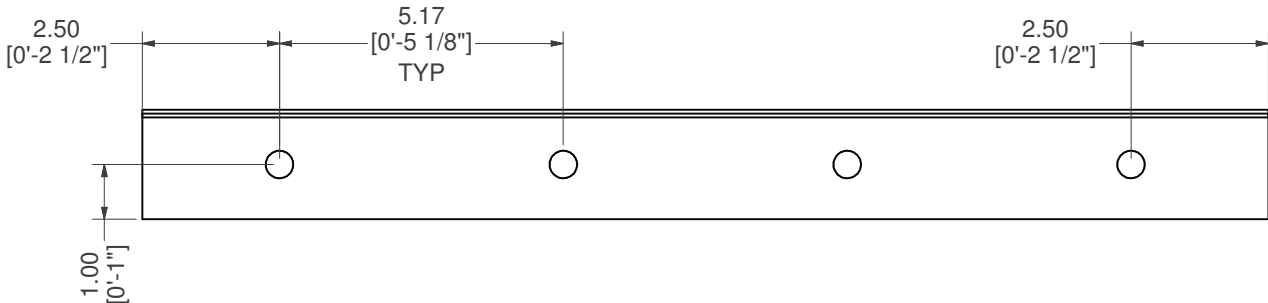
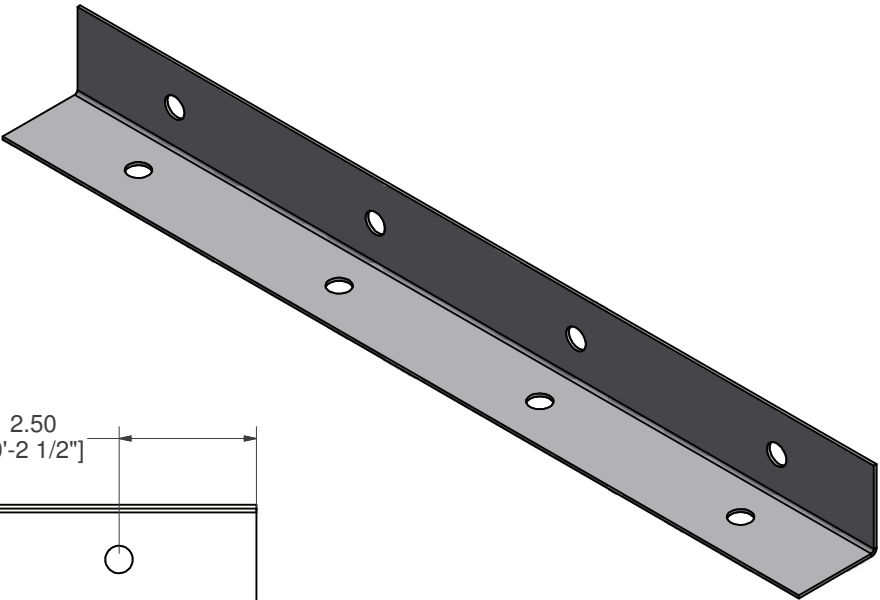
DRAWN BY: BR

SHEET: 14 OF 19




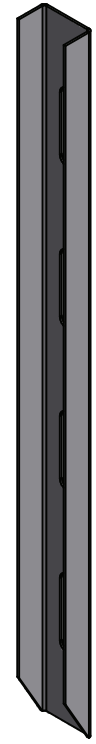
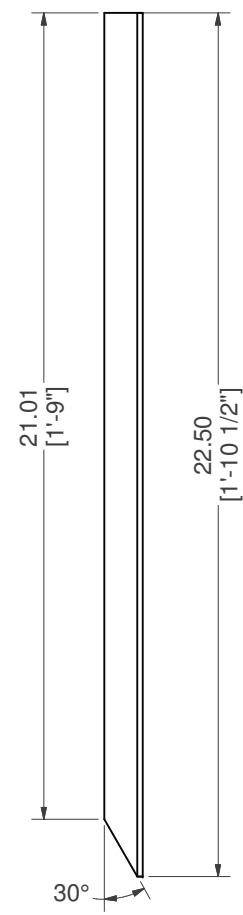
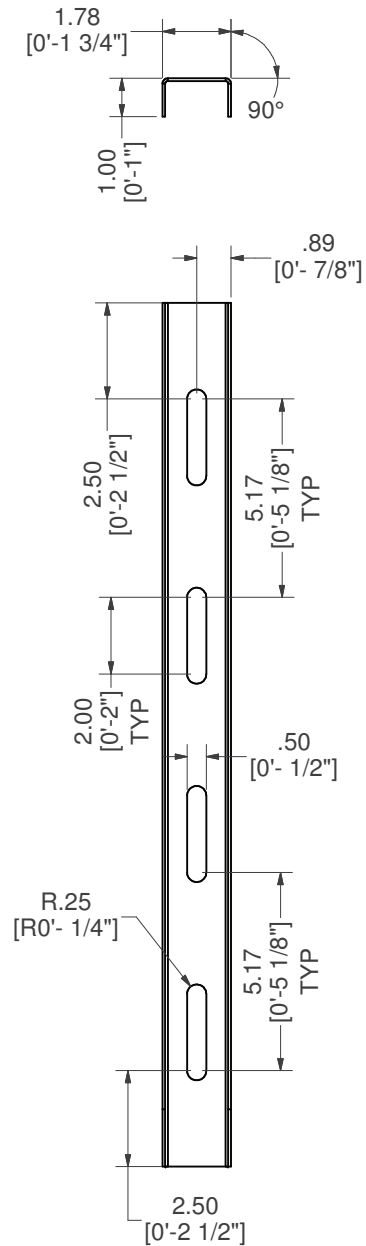
BRACE, CENTER SUPPORT

PART #: ESC-7946-CB 	WEIGHT: 14.17 lbmass	MACHINE TIME: N/A	FILE/DIRECTORY: C:\Vault\FTW\Design\CUSTOM STEPS\ESC-10000-10999\ESC-10698.idw
	TOLERANCES EXCEPT AS NOTED 0/0 0.0 0.00 0.000 0' ±1/8 ±0.25 ±0.0625 ±0.03125 ±1/2'	MATERIAL: 14 GA. GALVANIZED	DATE : 7/13/2020
DRAWN BY: BR	SHEET : 15 OF 19		




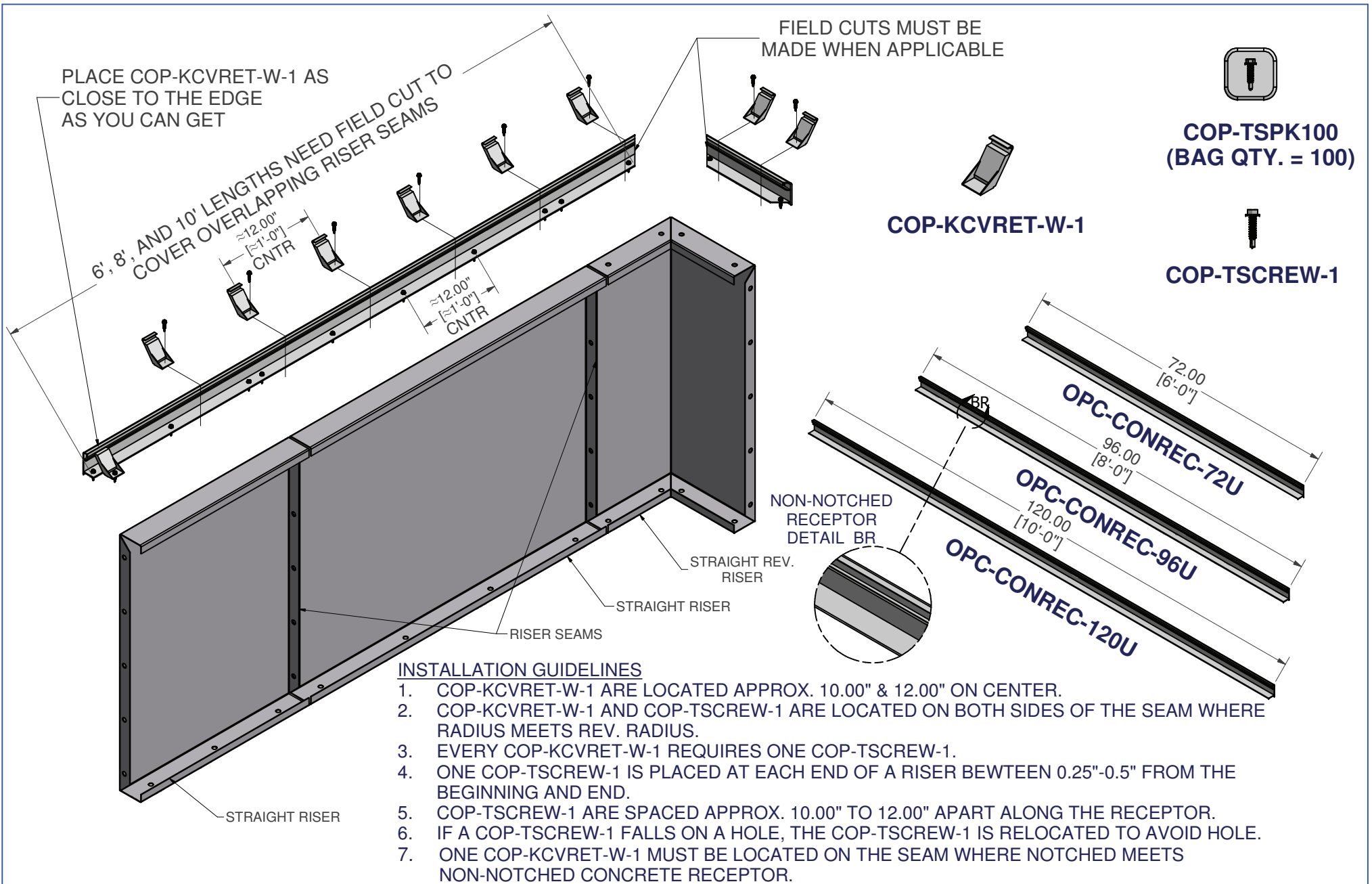
BRACE, 90° L BRACKET

PART #: ESC-5881-BB 	WEIGHT: 1.59 lbmass	MACHINE TIME: N/A	FILE/DIRECTORY: C:\Vault\FTW\Design\CUSTOM STEPS\ESC-10000-10999\ESC-10698.idw
	TOLERANCES EXCEPT AS NOTED 0/0 0.0 0.00 0.000 0' ±1/8 ±0.25 ±0.0625 ±0.03125 ±1/2'	MATERIAL: 14 GA. GALVANIZED	DATE: 7/13/2020
DRAWN BY: BR	SHEET: 16 OF 19		



BRACE, DRIVE STAKE CHANNEL SUPPORT

PART #: ESC-9230-DS 	WEIGHT: 1.50 lbmass	MACHINE TIME: N/A	FILE/DIRECTORY: C:\Vault\FTW\Design\CUSTOM STEPS\ESC-10000-10999\ESC-10698.idw
	TOLERANCES EXCEPT AS NOTED 0/0 0.0 0.00 0.000 0' ±1/8 ±0.25 ±0.0625 ±0.03125 ±1/2'	MATERIAL: 14 GA. GALVANIZED	DATE: 7/13/2020
	DRAWN BY: BR	SHEET: 17 OF 19	



NON-NOTCHED CONCRETE RECEPTOR FIELD INSTALLATION

PARS #: STRAIGHT CONCRETE RECEPTOR	WEIGHT: 77.51 lbmass	MACHINE TIME: N/A	FILE/DIRECTORY: C:\Vault\FTW\Design\CUSTOM STEPS\ESC-10000-10999\ESC-10698.idw
	TOLERANCES EXCEPT AS NOTED 0/0 0.0 0.00 0.000 0' ±1/8 ±0.25 ±0.0625 ±0.03125 ±1/2"	MATERIAL:	DATE: 7/13/2020
DRAWN BY: BR	SHEET: 18 OF 19		



PLACE COP-KCVRET-W-1 AT SEAMS WHERE STRAIGHT MEETS A RADIUS/REV. RADIUS.

PLACE COP-TSCREW-1 ON BOTH SIDES OF THE SEAMS.

PLACE COP-KCVRET-W-1 AS CLOSE TO THE END EDGE AS YOU CAN GET.

FIELD CUTS MUST BE MADE WHEN APPLICABLE

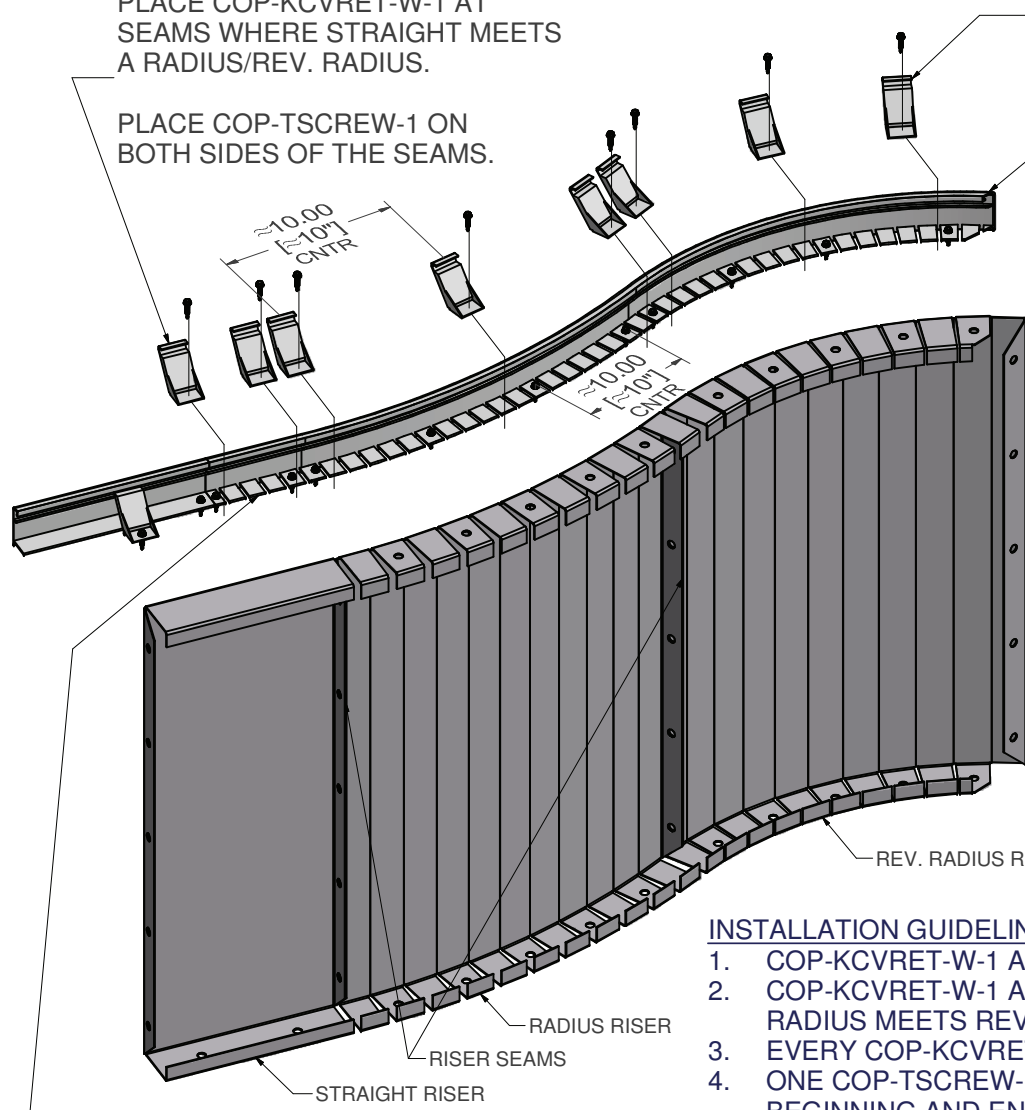


COP-TSPK100
(BAG QTY. = 100)

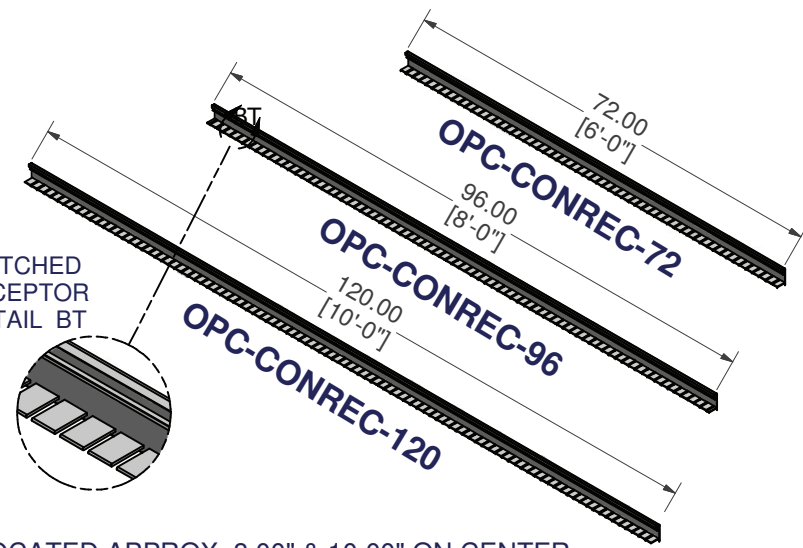


COP-TSCREW-1

COP-KCVRET-W-1



NOTCHED RECEPTOR DETAIL BT



ALLOW AN APPROX. OF 6.00" OF OVERLAP GOING FROM RADIUS/ REV. RADIUS TO A STRAIGHT RISER.

INSTALLATION GUIDELINES

1. COP-KCVRET-W-1 ARE LOCATED APPROX. 8.00" & 10.00" ON CENTER.
2. COP-KCVRET-W-1 AND COP-TSCREW-1 ARE LOCATED ON BOTH SIDES OF THE SEAM WHERE RADIUS MEETS REV. RADIUS.
3. EVERY COP-KCVRET-W-1 REQUIRES ONE COP-TSCREW-1.
4. ONE COP-TSCREW-1 IS PLACED AT EACH END OF A RISER BETWEEN 0.25"-0.5" FROM THE BEGINNING AND END.
5. COP-TSCREW-1 ARE SPACED APPROX. 8.00" TO 10.00" APART ALONG THE RECEPTOR.
6. IF A COP-TSCREW-1 FALLS ON A HOLE, THE COP-TSCREW-1 IS RELOCATED TO AVOID HOLE.
7. ONE COP-KCVRET-W-1 MUST BE LOCATED ON THE SEAM WHERE NOTCHED MEETS NON-NOTCHED CONCRETE RECEPTOR.

NOTCHED CONCRETE RECEPTOR FIELD INSTALLATION

PART #: REV-RADIUS CONCRETE RECEPTOR

WEIGHT:
52.49 lbmass

MACHINE TIME:
N/A

FILE/DIRECTORY:

C:\Vault\FTW\Design\CUSTOM STEPS\ESC-10000-10999\ESC-10698.idw



TOLERANCES EXCEPT AS NOTED
0/0 0.0 0.00 0.000 0'
±1/8 ±0.25 ±0.0625 ±0.03125 ±1/2"

MATERIAL:

DATE: 7/13/2020

NOTES:

DRAWN BY: BR

SHEET: 19 OF 19